

Stream 

*The spa that pushes
the limits of comfort!*



www.streamspas.com/en

Image for reference only. Colors and specifications may vary.

Stream

YOUR STREAM WILL NOT ONLY FEEL GOOD, BUT IT WILL ALSO LOOK GOOD.

The **Stream** is a new generation spa. It's roominess exudes unparalleled comfort. It's 100% accessibility exudes peace of mind and above all, it's extremely affordable. The **Stream** was engineered to combine comfort and roominess. It was designed with multiple seating options for massage variety and to accommodate different body shapes and sizes. It also has an oversized footwell for added leg comfort. The lounge is unique in that it can be used by a single person or with a second person relaxing at the other end. The lounge chairs are extremely roomy, as well, and two are equipped with armrests for added seating comfort. The **Stream** also has two cool down seats that provide a break from your massage or simply, a chance to cool down a bit without having to exit the spa.

The **Stream** is equipped with a 5 inch turbo jet to enable a variety of massage options. And if you need to address a specific part of your body with dynamic force, you can direct all of the water through a single, turbo jet. Whatever your body desires, the **Stream** can deliver.

The **Stream** is manufactured as a 120V "Plug & Play" spa. You can simply set it in place**, fill it with water and plug it into a standard, dedicated 120V electrical outlet. And if you enjoy using your spa for long periods of time in cold weather, it can also be converted to 240V* for better heating efficiency.

The **Stream** was designed with a contemporary look that you will be proud to display in your backyard. It has the ambiance of an LED backlit, cascading waterfall which is enhanced by external LED sconce lighting in each corner of the spa.



Image for reference only. Colors and specifications may vary.

FEATURES

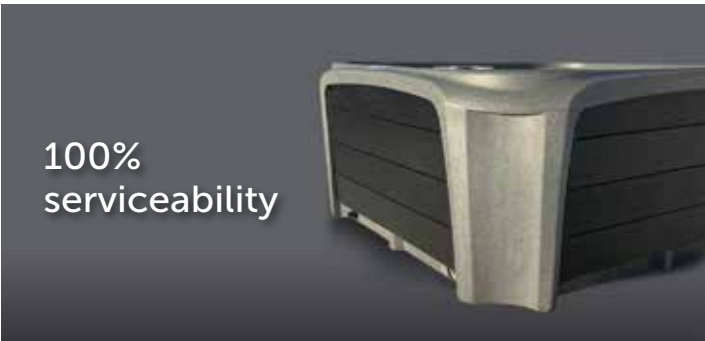


Image for reference only. Colors and specifications may vary.

SPECIFICATIONS

Size: 83" x 78" x 34"

Estimated Dry Weight: 515 lb

Estimated Water Capacity: 330 US gal

Estimated Full Weight: 3,270 lb

Structure: Rotationally Molded Polyethylene

Insulation: New Thermo Layer

Seating: 3 Chairs

1 Dual Function Lounger

2 Step In / Cool Down Seats

Jets: 32 Jets

1x 5 Inch Turbo Jet

Waterfall: Cascading with LED Back Lighting

Lighting: Internal Wall LED Lighting and LED Main Light

Quadruple Waterfall LED Lighting

Exterior Sconce LED Corner Lighting

Drain Valve: Included

Equipment Pack: Balboa VS300

Top Side Control: Balboa VL260

Pump: 2.0bhp, 2 Speed

Heater: 1.0kw/4.0kw

Power Requirements Volts/Amps:

120v/15amp / 240v/40amp*

Electrical Certification: ETL Can. / ETL U.S.

Cover: Premium Vinyl 4/2 Pitch

Available
Colours

Graphite

White

Moka

It's as *easy*
as one, two, three



Place**



Fill



Plug 120V
(conv. 240V)*



WARRANTY
1
YEAR
PARTS, PUMP,
SPA PACK
AND PLUMBING



WARRANTY
5
YEARS
PRO RATA
ON SHELL

BUILT TO LAST A LIFETIME

- Virtually indestructible
- No cracking or chipping
- Easy surface care and repair

TRULY PORTABLE

- Light weight
- Fits through most doorways
- Easy to transport

NO HASSLE INSTALLATION

- No site preparation required**
- Sits on any solid, level surface
- No electrician required (120V)*

PROUDLY
MADE IN
Canada

* A certified electrician is required for a 240V conversion.

** The ground must be well-leveled.

Image for reference only. Colors and specifications may vary.